

MTCH1 Antibody (Center)
Affinity Purified Rabbit Polyclonal Antibody (Pab)
Catalog # AP20405c**Specification**

MTCH1 Antibody (Center) - Product Information

Application	WB,E
Primary Accession	O9NZJ7
Other Accession	Q791T5
Reactivity	Human
Predicted	Mouse
Host	Rabbit
Clonality	Polyclonal
Isotype	Rabbit IgG
Calculated MW	41544
Antigen Region	151-177

MTCH1 Antibody (Center) - Additional Information**Gene ID** 23787**Other Names**

Mitochondrial carrier homolog 1, Presenilin-associated protein, MTCH1, PSAP

Target/Specificity

This MTCH1 antibody is generated from rabbits immunized with a KLH conjugated synthetic peptide between 151-177 amino acids from the Central region of human MTCH1.

Dilution

WB~~1:1000

E~~Use at an assay dependent concentration.

Format

Purified polyclonal antibody supplied in PBS with 0.09% (W/V) sodium azide. This antibody is purified through a protein A column, followed by peptide affinity purification.

Storage

Maintain refrigerated at 2-8°C for up to 2 weeks. For long term storage store at -20°C in small aliquots to prevent freeze-thaw cycles.

Precautions

MTCH1 Antibody (Center) is for research use only and not for use in diagnostic or therapeutic procedures.

MTCH1 Antibody (Center) - Protein Information**Name** MTCH1 {ECO:0000303|PubMed:36264797, ECO:0000312|HGNC:HGNC:17586}

Function Protein insertase that mediates insertion of transmembrane proteins into the mitochondrial outer membrane (PubMed:[36264797](#)). Catalyzes insertion of proteins with alpha-helical transmembrane regions, such as signal-anchored, tail-anchored and multi-pass membrane proteins (By similarity). Does not mediate insertion of beta-barrel transmembrane proteins (By similarity). May play a role in apoptosis (PubMed:[12377771](#)).

Cellular Location

Mitochondrion outer membrane; Multi-pass membrane protein

Tissue Location

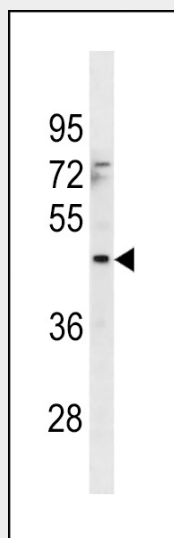
Widely expressed with a predominant expression in brain.

MTCH1 Antibody (Center) - Protocols

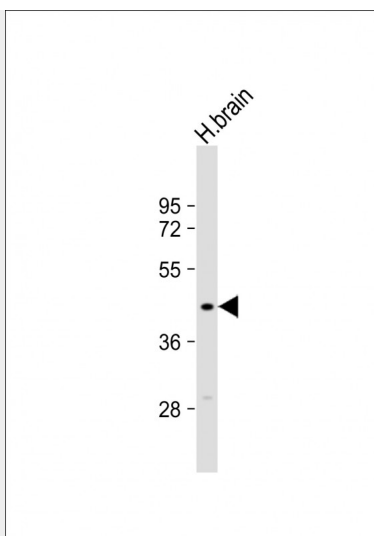
Provided below are standard protocols that you may find useful for product applications.

- [Western Blot](#)
- [Blocking Peptides](#)
- [Dot Blot](#)
- [Immunohistochemistry](#)
- [Immunofluorescence](#)
- [Immunoprecipitation](#)
- [Flow Cytometry](#)
- [Cell Culture](#)

MTCH1 Antibody (Center) - Images



MTCH1 Antibody (Center) (Cat. #AP20405c) western blot analysis in 293 cell line lysates (35ug/lane). This demonstrates the MTCH1 antibody detected the MTCH1 protein (arrow).



Anti-MTCH1 Antibody (Center) at 1:1000 dilution + human brain lysate Lysates/proteins at 20 µg per lane. Secondary Goat Anti-Rabbit IgG, (H+L), Peroxidase conjugated at 1/10000 dilution. Predicted band size : 42 kDa Blocking/Dilution buffer: 5% NFDM/TBST.

MTCH1 Antibody (Center) - Background

Potential mitochondrial transporter. May play a role in apoptosis.